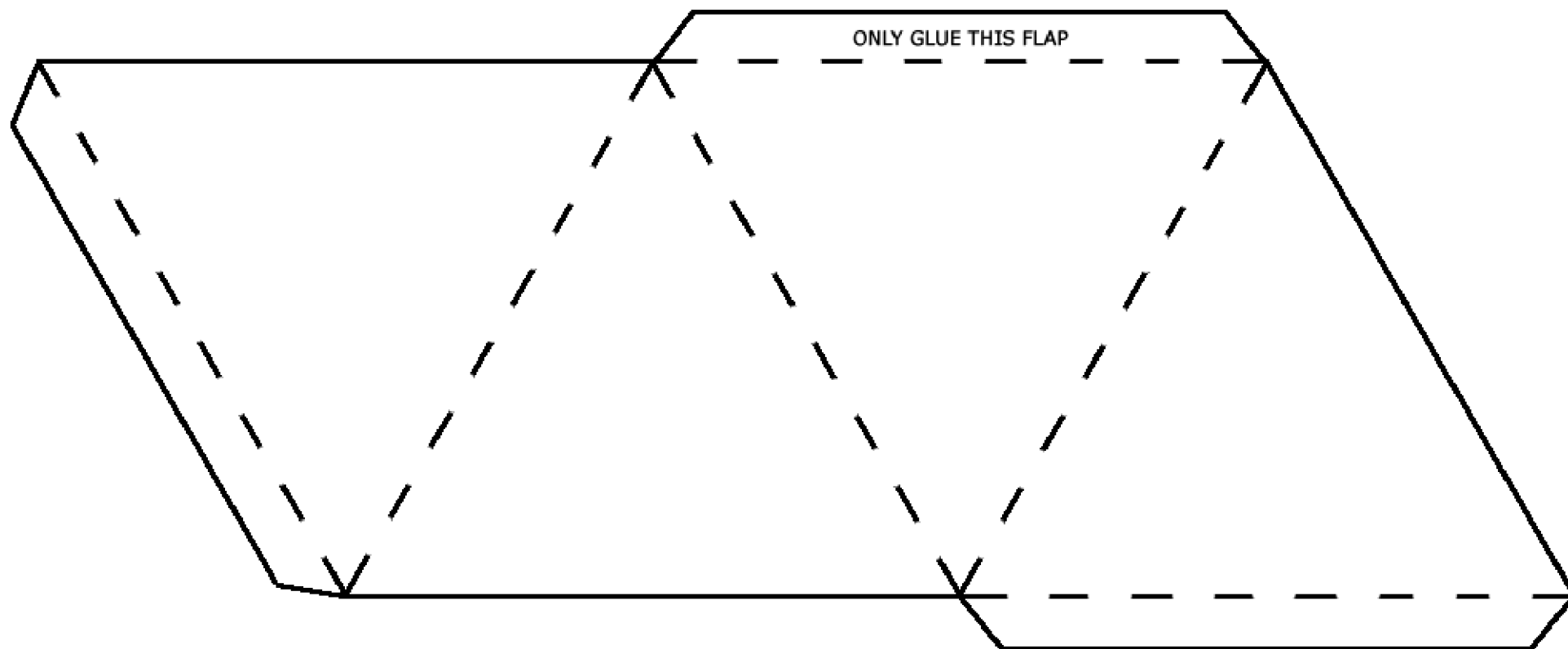


The Tetrahedron's Geometry

Desk Exercise Two Model (Page 1 of 3)

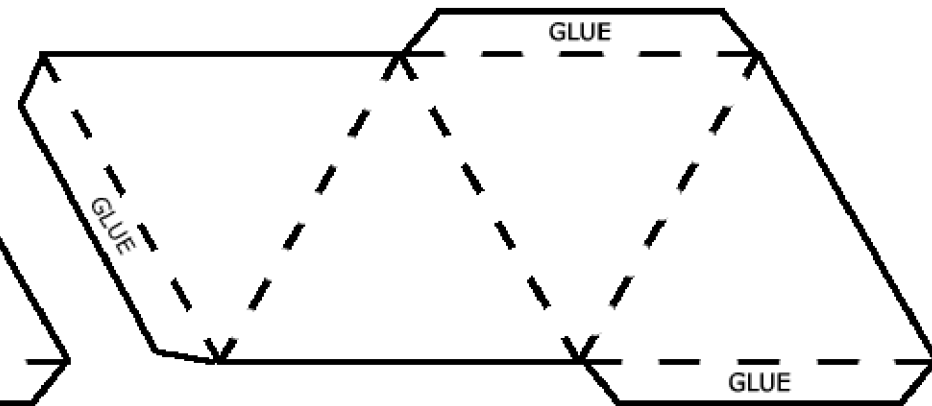
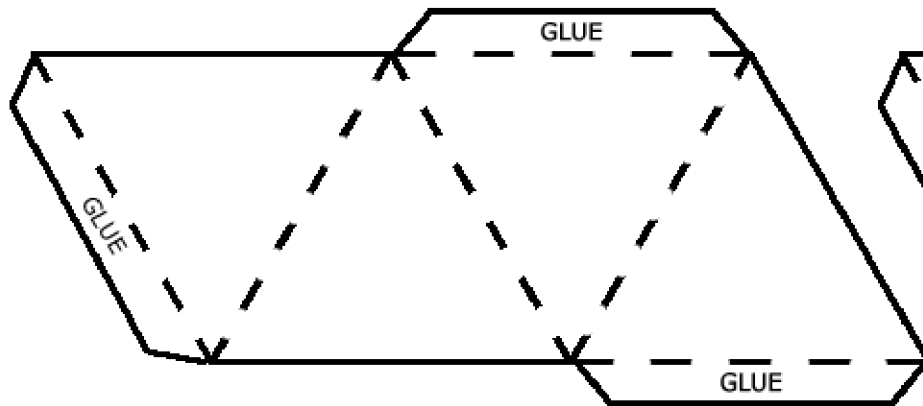
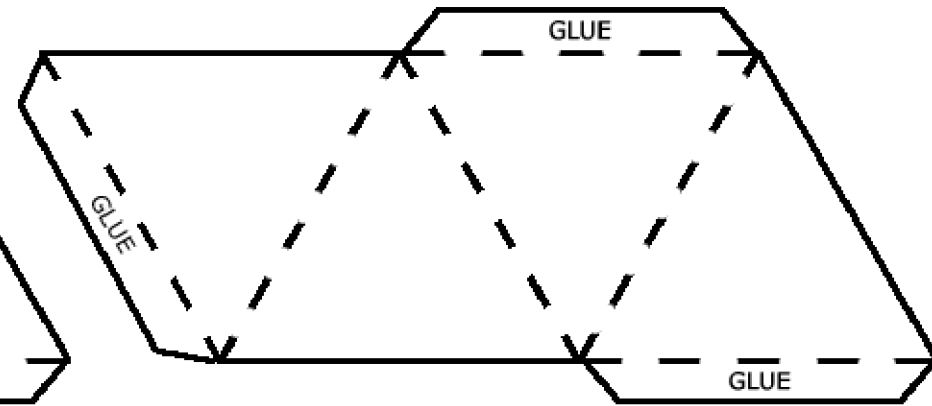
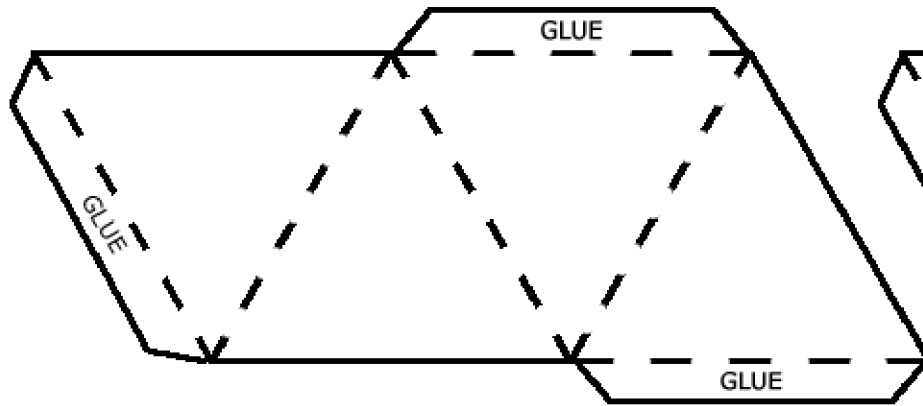
CUT ALONG THE SOLID LINES
FOLD ALONG THE DOTTED LINES
GLUE ONE FLAP ONLY



The Tetrahedron's Geometry

Desk Exercise Two Model (Page 2 of 3)

CUT ALONG THE SOLID LINES
FOLD ALONG THE DOTTED LINES
GLUE TO MAKE 4 SMALL TETRAHEDRA



The Tetrahedron's Geometry

Desk Exercise Two Model (Page 3 of 3)

CUT ALONG THE SOLID LINES
FOLD ALONG THE DOTTED LINES
GLUE TO MAKE AN OCTAHEDRON

